



Pitt St. Residence

Common Ground Communities

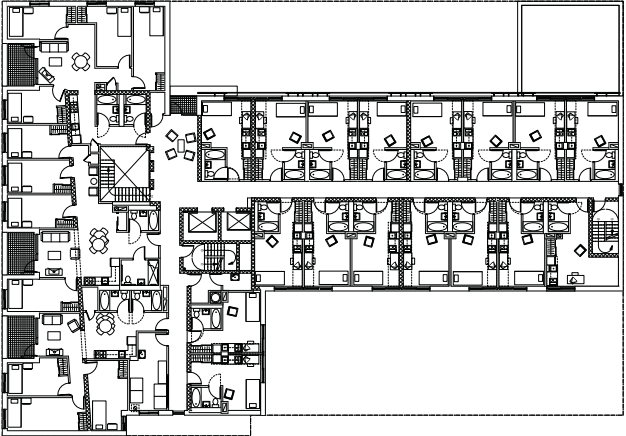
Common Ground's Pitt Street Residence is the first truly sustainable affordable housing project in New York City. Common Ground has successfully completed several similar projects in New York City, and has always provided an attractive well designed environment for its tenants. For this project they approached K+C to design an efficient, healthy and low-energy building that fit into the existing lower east side context.

The 100,000 sf Pitt Street Residence will house 264 residents -- a mix of homeless special populations (HIV/AIDS, or mentally disabled), young adults aging out of foster care, and working low income single adults. The ground floor accommodates a full range of social services, and opens onto a landscaped rear garden. The three-story 'base' accommodates shared suites for the young adults with their own terraces, laundry and computer facilities. Above this are nine floors of small efficiency units with daylight hallways and informal social areas.

The project is supported by funds from NYS HHAC and NYC HPD, but will exceed their standards, setting new benchmarks for sustainable social housing in America.



Construction photo February 2009



Common Ground Community, Inc.
 Kiss+Cathcart, Architects
 Goldman Copeland Associates, Engineers
 Rober Silman Associates, Structure
 Donna Walcavage Landscape Architecture + Urban Design
 AWA Architectural Lighting Design

\$31,000,000
 100,000 sf
 LEED Silver
 Under construction, completion 2009

