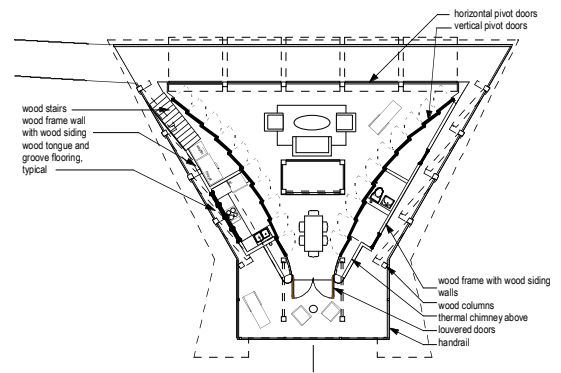
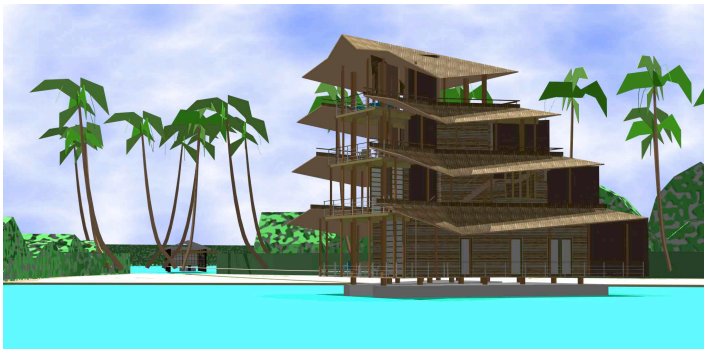




bastimentos island, bocas del toro, panama

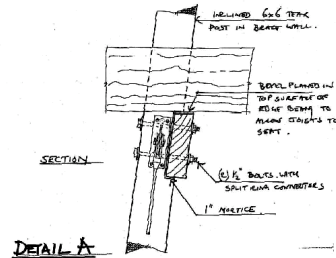
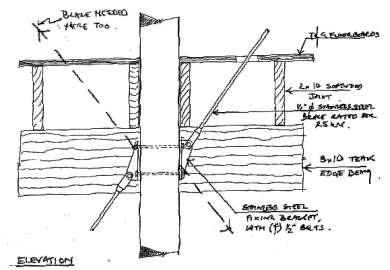
# salt creek residence



On this remote tropical island off the Caribbean coast of Panama there are no connections possible to power, water or waste. Although warm all year round, the climate is often wet and humid. A modern pagoda taking advantage of views and breezes was the client's wish.

The house is designed as an air siphon in plan and a convective chimney in section. By adjusting louvers the house can maximize the available breeze or create its own convection drafts.

Kiss and Cathcart worked with Buro Happold Engineers to design a stainless steel cross braced structure on floating pontoons, using local sustainably harvested timber. This eliminates the need for complex pile foundations in an area of high seismic risk. Rainwater collection will supply water for the house, photovoltaic panels will supply power and composting toilets and planted greywater beds will treat waste.



projected completion 2004

## Kiss + Cathcart, Architects

44 COURT ST. TOWER C  
 BROOKLYN NY 11201  
 tel 718 237 2786  
 fax 718 237 2025  
 www.kisscathcart.com